

# **FCM/CWTA Antenna System Siting Protocol Template**

May 2013

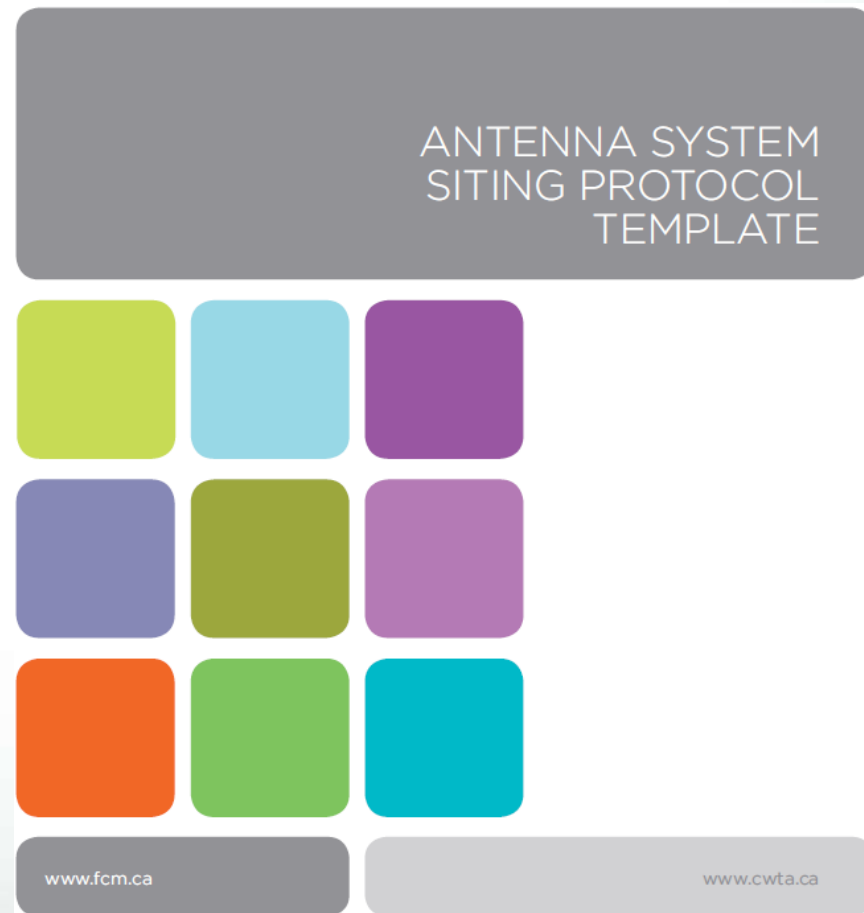
- Wireless data traffic is increasing exponentially. According to Cisco, Canadian mobile data traffic will grow at a compound annual growth rate of 57% from 2012 to 2017.
- In order to meet this demand, more wireless facilities are being installed wherever people use wireless service, which is increasingly in the home, as well as at work, or while commuting.
- Wireless service providers installing antenna systems (Proponents) and Municipalities are both directed by Industry Canada regulations and guidelines for antenna system siting, local input and consultation process.
- Limitations in the federal regulations were proving to be problematic for Municipalities and Proponents.

- Surprise Towers:
  - Federal exemptions meant structure-mounted antenna systems and all freestanding towers less than 15 metres in height were being installed without municipal knowledge.
  - Municipalities were caught off guard by residents calling to inquire about new, sub 15-metre towers being erected in their neighbourhoods.
  
- Developing Protocols:
  - Municipalities were unsure which local preferences were allowed within the Industry Canada guidelines.
  - Not all Municipalities had the resources to develop their own protocols.

- Even though federal regulations are respected, antenna system siting was increasingly becoming a lightning rod issue.
- Limited guidance on the scope of local protocols was resulting in inconsistent, and sometimes untenable, municipal siting rules.
- Inconsistent siting preferences can frustrate efforts to efficiently deploy networks that provide consistent service levels across an entire municipality.

# The Solution: FCM/CWTA Protocol

- In early 2012, CWTA invited FCM to develop a joint protocol template governing how Canada's wireless carriers will work with Canadian municipalities when proposing new antenna installations.
- After more than nine months of collaboration, the protocol was formally launched on February 28, 2013.
- Available at: [www.fcm.ca](http://www.fcm.ca)



- Provides a detailed resource to help Municipalities formalize any or all of the steps common to the antenna siting process:
  1. Jurisdiction and Roles
  2. Definitions
  3. Excluded Structures
  4. Pre-Consultation with the Municipality
  5. Development Guidelines
  6. Proposal Submission
  7. Public Consultation Process
  8. Statement of Concurrence or Non-concurrence
  9. Consultation Process Timeframe
  10. Letter of Undertaking
  11. Redundant Antenna System

- The Protocol provides common sense solutions to the challenge of building Canada's digital infrastructure in a timely manner while respecting local land-use preferences and community concerns.
  
- The Protocol:
  - Augments and addresses the limitations of existing federal regulations, which do not require notification or consultation for antenna siting proposals below 15 metres in height.
  - Addresses the need for increased communication, including notification, and collaboration between municipalities and telecommunications carriers regarding the location and visual aesthetics of proposed antenna systems.
  - Clarifies specific procedures and timelines that previously were not formally issued by Industry Canada.
  - Recognizes that there is no one-size-fits all set of siting preferences for each municipality in Canada, or even within a given municipality. The protocol template makes it clear that proponent and municipalities should discuss local land use preferences on a case-by-case basis.

- Through the Joint Protocol Template process, the wireless industry has committed to undertake certain antenna siting procedures beyond the minimums mandated by federal regulation. Namely:
  - Proponents will notify the municipality of all proposed installations.
  - For structure-mounted antennas: the Proponent will try to address any municipal concerns as they pertain to design/screening preferences.
  - For freestanding towers under 15 meters and additions to towers under 25% of the height of the tower: the Proponent will respond to municipal concerns regarding design guidelines, and will engage in consultation (municipal and/or public) where requested.
- Proponents will anticipate the high likelihood of public consultation where towers are in residential areas.



- **Proponents:**
  - Proponents will continue to follow the Industry Canada default public consultation process when siting antennas in municipalities that do not have custom protocols, and will continue to follow local protocols where they exist.
  - However, municipalities that would like to benefit from the enhanced notification and consultation commitments contained in the protocol template before they are able to adopt a new protocol should alert the Proponents siting antennas within their municipality of that preference.



- **Does a municipality using the protocol template have to adopt it in its entirety?**
  - No. The template is intended as a resource for municipalities to use in whole or in part when developing their own protocols.
  
- **Can municipalities add contents to their protocols that are not found in the protocol template?**
  - Yes. However, only contents of the protocol template are pre-endorsed by the wireless industry.
  
- **Will implementing the notification requirements in the protocol template increase the burden on municipal staff?**
  - No. Notifications can be sent in the form of an email from Proponents, and do not require a response from municipal staff. As well, municipalities can eliminate or reduce notification requirements at their own discretion.

# Thank You

**Kurt Eby**  
**Director, Regulatory Affairs**  
**CWTA**  
**80 Elgin Street, Suite 300**  
**Ottawa, Ontario K1P 6R2**  
**Tel: (613) 233-4888**  
**Fax: (613) 233-2032**  
**E-mail: [keby@cwta.ca](mailto:keby@cwta.ca)**